

## PRICE MOVEMENT

SET50 Index close down 24.30 points, or -3.22% from the previous month closing at 729.78 points. Market sentiment is still mainly affected by slow global economic recovery and Greece debt crisis. Investors still remain cautious on domestic political issues concerning the mid-year election.

For precious metals, LBMA Gold and Silver fixing for the end of June were at \$1508 and \$35.02 respectively. Both metals declines by 1.89% and 9.39% from the previous month.

## TRADING STATISTICS

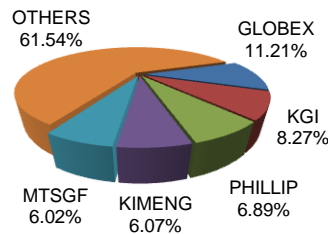
Unit : Contracts

Contract	Daily average volume		Open interest (as of 30 Jun 11)	YTD Volume
	Jun 10	Jun 11		
<b>Futures</b>	<b>16,395</b>	<b>36,505</b>	<b>101,617</b>	<b>3,628,224</b>
SET50	9,647	16,142	25,192	1,616,564
Precious Metals	3,441	13,194	39,288	1,159,755
Gold	3,441	13,010	37,721	1,155,699
Silver		451	1,567	4,056
Single Stock	3,306	7,165	37,088	851,765
Interest Rate		3	49	140
<b>Options</b>	<b>504</b>	<b>690</b>	<b>1,329</b>	<b>60,452</b>
SET50	504	690	1,329	60,452
<b>TOTAL</b>	<b>16,899</b>	<b>37,195</b>	<b>102,946</b>	<b>3,688,676</b>

## BROKER RANKING

Unit : Contracts

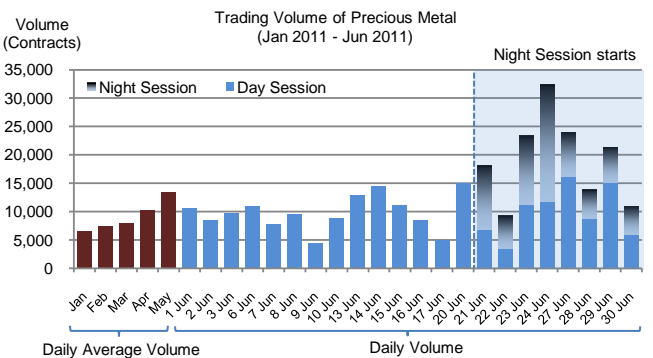
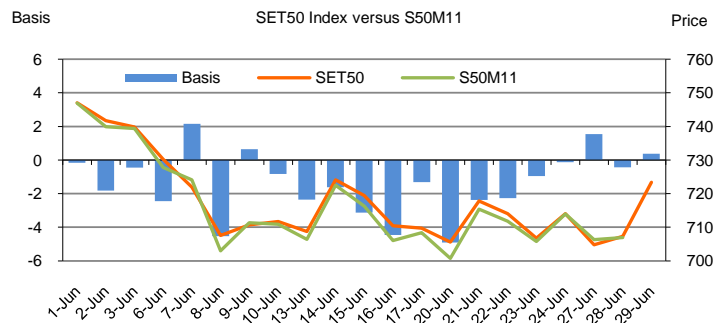
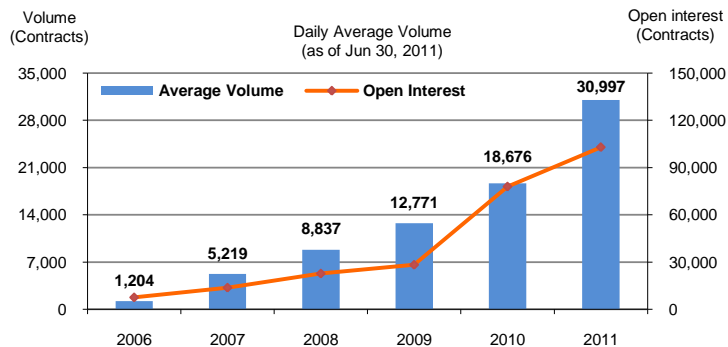
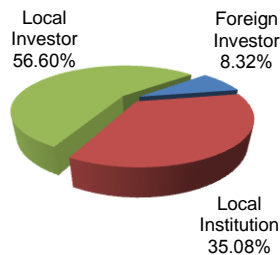
Rank	Broker	Volume	Percent
1	GLOBEX	183,428	11.21%
2	KGI	135,292	8.27%
3	PHILLIP	112,802	6.89%
4	KIMENG	99,326	6.07%
5	MTSGF	98,533	6.02%
Top 5 total		629,381	38.46%



## INVESTOR BREAKDOWN

Unit : Contracts

	Trading volume (Jun 11)		
	Long	Short	Net
Foreign investors	65,861	70,274	(4,413)
Local institutions	292,440	281,654	10,786
Local investors	459,991	466,364	(6,373)



TFEX Night Session for gold and silver futures started on June 20th, 2011. TFEX's market opens at 9:45 hrs and closes at 16:55 hrs for day session and it reopens at 19:30 hrs and continues until 22:30 hrs for the night session for Precious Metals. The average trading volume during Night Session for this month (June 20th - June 30th) was 9,229 contracts, or more than 90% of the day session.



For more information: [www.tfex.co.th](http://www.tfex.co.th) Or contact us: [tfex\\_admin@set.or.th](mailto:tfex_admin@set.or.th)

