

PRICE MOVEMENT

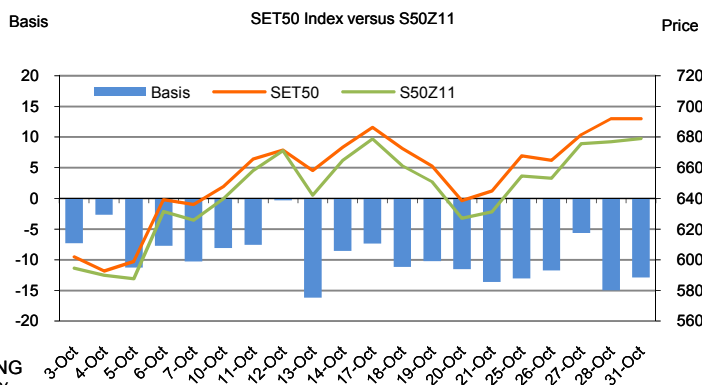
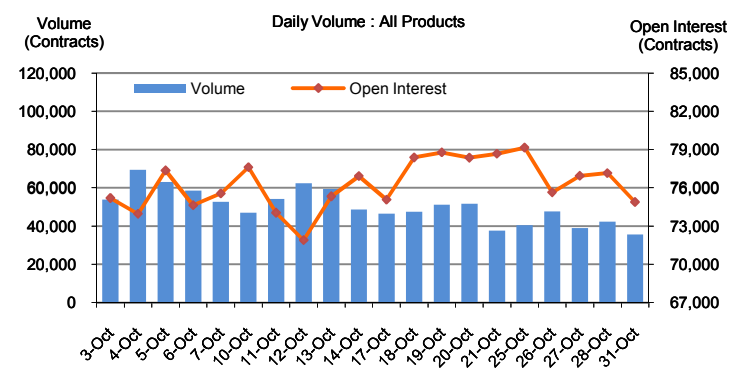
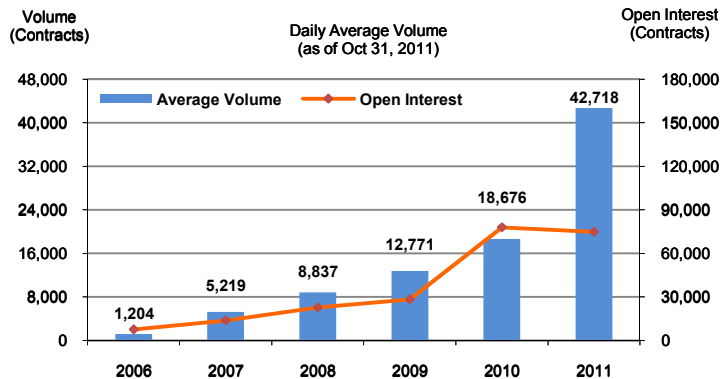
SET50 Index recovered more than 55 points, or about 8.75% from the previous month closing at 691.97 points. Despite the on-going flood crisis in Thailand that have estimated to cause more than 400 billion baht in damages, excluding successive impacts and chain of effects to providing goods and service to customers. SET Index still see some positive gain where the gain was primarily driven by the positive outcome of the European Union meeting to improve the financial conditions in their continent.

For precious metals, LBMA Gold A.M. and Silver fixing for the end of October were at \$1718 and \$34.24 respectively.

TRADING STATISTICS

Unit : Contracts

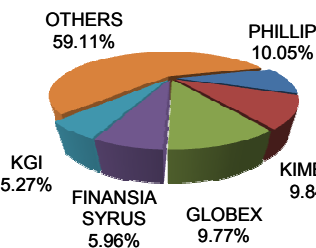
Contract	Daily average volume		Open interest (as of 31 Oct 11)	YTD Volume
	Oct 10	Oct 11		
Futures	23,095	50,214	67,722	8,478,125
SET50	9,751	29,321	34,287	3,578,135
Precious Metals	6,448	14,441	20,954	3,496,009
Gold	6,448	14,302	20,544	3,465,632
Silver		139	410	30,377
Single Stock	6,894	6,189	12,373	1,400,934
Brent Crude Oil		263	95	2,628
Interest Rate		0	13	419
Options	267	318	7,158	100,394
SET50	267	318	7,158	100,394
TOTAL	23,362	50,531	74,880	8,578,519



BROKER RANKING

Unit : Contracts

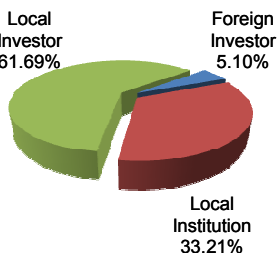
Rank	Broker	Volume	Percent
1	PHILLIP	202,701	10.05%
2	KIMENG	198,294	9.84%
3	GLOBEX	196,996	9.77%
4	FINANSIA	120,220	5.96%
5	KGI	106,178	5.27%
Top 5 total		824,389	40.89%



INVESTOR BREAKDOWN

Unit : Contracts

	Trading volume (Oct 11)		
	Long	Short	Net
Foreign Investors	58,295	44,548	13,747
Local Institutions	336,444	333,069	3,375
Local Investors	613,259	630,381	(17,122)



Thailand Futures Exchange (TFEX) has reconstructed and launched its new user-friendly website at

www.tfex.co.th

We welcome all feedbacks and comments regarding our new website. Please send any comments directly to tfex_admin@set.or.th



For more information:
www.tfex.co.th

